

The Prosthodontist Masters Series

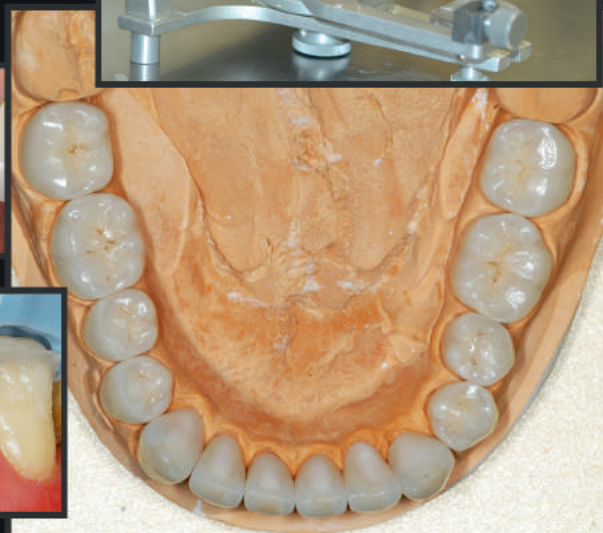
Mini-Residency in Prosthodontics

Tony Rotondo, Michael Mandikos
and Harry Hughes



The mini residency has been a great journey for my clinical skill development. Each module was well structured to broaden our views and knowledge, lift our standards, and most important of all, guide us in the right direction. I would strongly recommend the mini-residency program to any dentist who wants to achieve the best result in a full mouth rehabilitation.

Robert Zhang "Class of 2007"



Three x 3-Day Modules

Rotondo Dental Practice, Brisbane City.

27 - 29 July, 7 - 9 September and 16- 18 November 2017

A practical program designed for the general dentist including didactic and hands-on components

- Diagnosis and Treatment Planning
- Articulators, Occlusal Schemes and concepts
- Jaw Registrations, Diagnostic wax-ups and Provisional Restorations
- Sequencing of cases and Multidisciplinary Treatment
- The use of splints
- Literature reviews and Presentations from Guest Speakers
- All we can teach you short of enrolling in a 3-year graduate program!

**The only short-course program on complex restorative dentistry in Australia
Designed to help you take a full-arch case from start to finish. (60 CPD Points)**

*'CEO Dental guarantees courses are compliant with existing
Dental Board of Australia Guidelines on continuing professional development'*

** For more information, please contact info@ceodental.com.au*

The Prosthodontist Masters Series

The Mini-Residency in Prosthodontics

Tony Rotondo, Michael Mandikos and Harry Hughes are pleased to announce that we will be again staging the Mini-Residency in Prosthodontics in 2016. Our program is now in its tenth year and the feedback from our attendees (all of whom have now become good friends) has been excellent. We can really cram a lot of material into 9 days of combined theory, practical, and of course some light hearted humour and entertainment!

The program this year again consists of 3 modules, each of three days duration (Thursday, Friday, Saturday). Each module will cover in suitable depth, the relevant theory and practical stages involved in performing complex restorative cases. There will be an amount of pre-course reading and essential literature reviews, to ensure participants are well schooled in the current clinical and materials research in this area of dentistry before we discuss these in depth during the course.

Participants will gain the most from this program if they have a case suitable for rehabilitation (or other significant treatment) prior to commencing the Mini-Residency or can locate one soon after completing Module 1 though this is not a requirement for registration. Each of the modules will prepare the participants sufficiently to return to their practices and commence the relevant stages of clinical treatment for their case. Accordingly, after completing the third module of the Mini-Residency, the participants will be able to return to their practices and complete their respective complex restorative cases. Whilst participants are encouraged to have a clinical case selected to treat during this course, it is not essential for everyone attending to have a case.

<u>Dates:</u>	Module 1	27 - 29 July 2017
	Module 2	7 - 9 September 2017
	Module 3	16 - 18 November 2017
<u>Venue:</u>	Rotondo Dental Practice, 4/106 Edward Street, Brisbane CBD. (Morning and afternoon teas and Lunches provided)	
<u>Attendance:</u>	Limited to 15 (No more than 8 without clinical cases)	
<u>Costs:</u>	\$5700 (+GST) for each module, deposit of \$1000 (+ GST) is required to secure registration to this program	

*Limited Attendance
Not every attendee
must bring a
Clinical Case*

Attendees who register for the program agree to register for all three modules as we are unable to take on new attendee's part of the way through the program. The course fee for each module will be invoiced approximately 4 weeks before the commencement of the respective module and is payable in advance of that 3-day program. Refunds are not possible due to our inability to accept other registrants part way through the overall program. A deposit payment is required to hold your place on this program.

Registration will be on a first come basis. To register for the Mini Residency please visit www.ceodental.com.au. Registration will be confirmed once your deposit is received. This deposit will then be applied to your payment for the final module. The pre-course registration material will then be sent to you. All instruments and materials will be provided during the modules, though participants should bring their own loupes.

We have a program which is unique in Australia. Our Faculty consists of 3 Full-Time Prosthodontists, a guest Prosthodontist from Sydney, An Orthodontist, and a Ceramist. Participants will have the opportunity to learn one-on-one from our faculty, and will have special access to the Alumni section of our website which contains copies of the lectures, course notes, instrument and materials lists, past and current literature. All our course alumnists retain ongoing access to this special resource.

The Mini Residency in Prosthodontics provides a certificate for 60CPD Points
CeoDental courses are compliant with existing Dental Board of Australia Guidelines on
Continuing Professional Development.